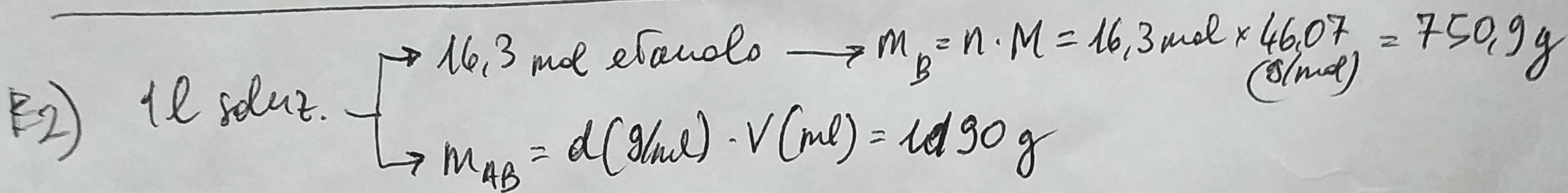
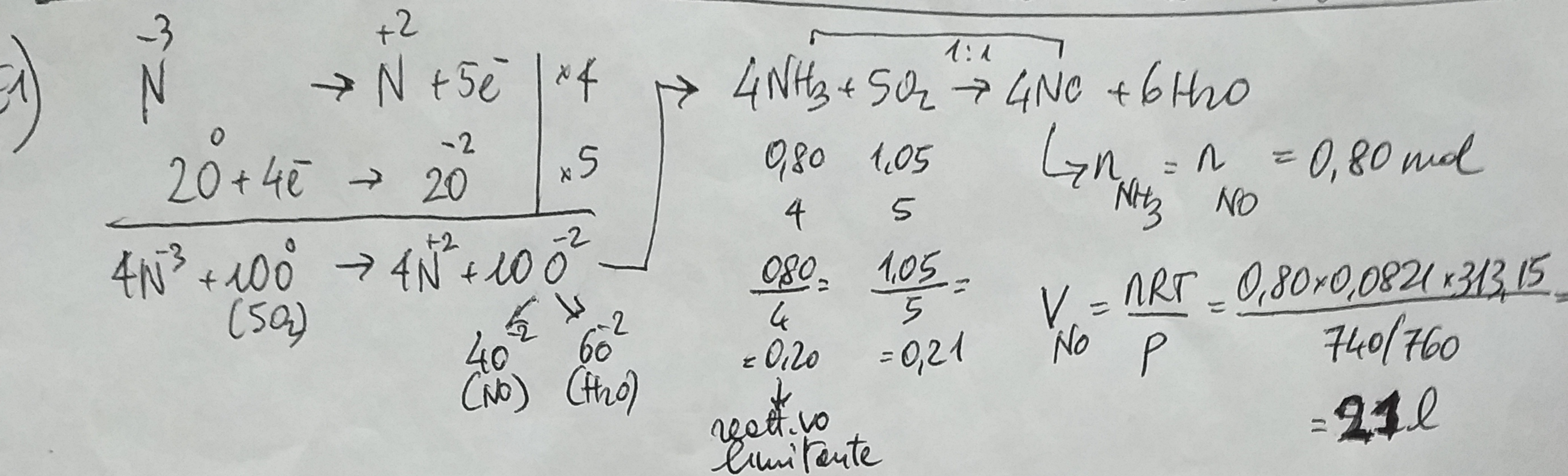


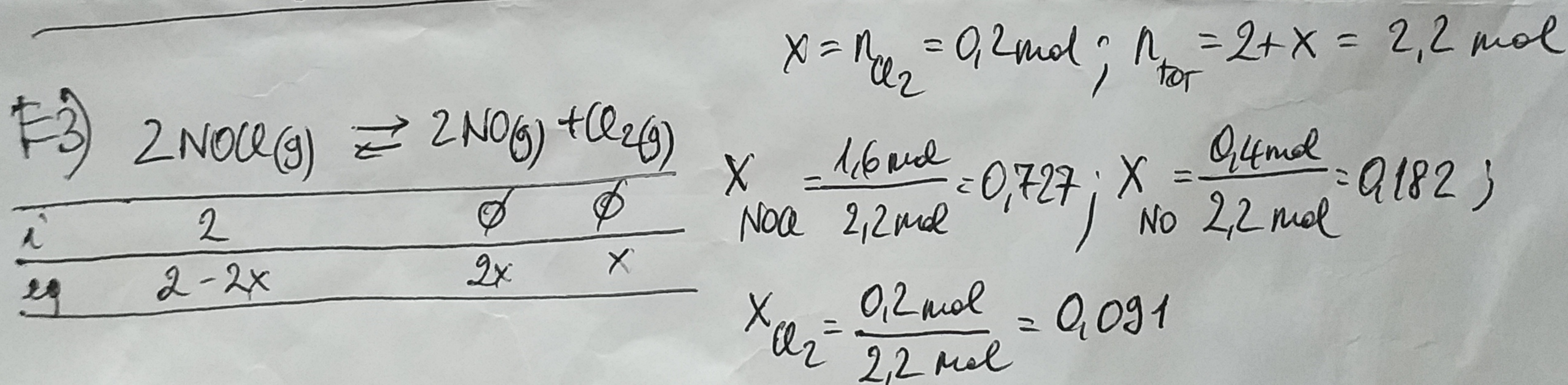
Soluzioni Esercizi Prova Chimica BGER del 16/01/2023



$m_A = m_{AB} - m_B = (1190 - 750,9) \text{ g} = 439,1 \text{ g} = 0,4391 \text{ kg}$

(in 1 l soluz.)

$m = \frac{16,3 \text{ g mol}}{0,4391 \text{ kg}} = 37,1 \frac{\text{mol}}{\text{kg}}; \quad t_{\text{eb}} = 100 + 0,512 \cdot 37,1 \cdot 1 = 119,0^\circ\text{C}$



$K_p = \frac{x_{\text{NO}}^2 \cdot x_{\text{Cl}_2}}{x_{\text{NOCl}}^2} \cdot P_{\text{tot}} = \frac{(0,182)^2 \cdot 0,091}{(0,727)^2} \cdot 1,1 = 6,3 \cdot 10^{-3}$